



# New York State Seal of Biliteracy and Checkpoint Testing with ACTFL Tests

**LTI** Language  
Testing  
International®  
EXCLUSIVE LICENSEE OF ACTFL



**ACTFL**  
Language Proficiency & Performance  
EXCLUSIVELY THROUGH LTI

The ACTFL Assessment of Performance toward Proficiency in Languages (AAPPL) has been reviewed and approved by the New York Department of Education for Checkpoint B (4+1 Pathway) and C (NYSSB). It can also be used for Checkpoint A. Depending on the level of achievement, different forms of the AAPPL can be used to assess learners' performance toward proficiency:

Level of Achievement	Proficiency Ranges for Each Level of Achievement	AAPPL Form*
Checkpoint A	Novice Mid – Novice High	Form A or B
Checkpoint B (4+1 Pathway Assessment)	Novice-High– Intermediate Mid	Form A or B
Checkpoint C	Intermediate Low – Intermediate High	Form B
NYSSB	Intermediate Mid - Intermediate High	Form B

\*Forms A/B consist of four components. Components can be purchased and administered separately.

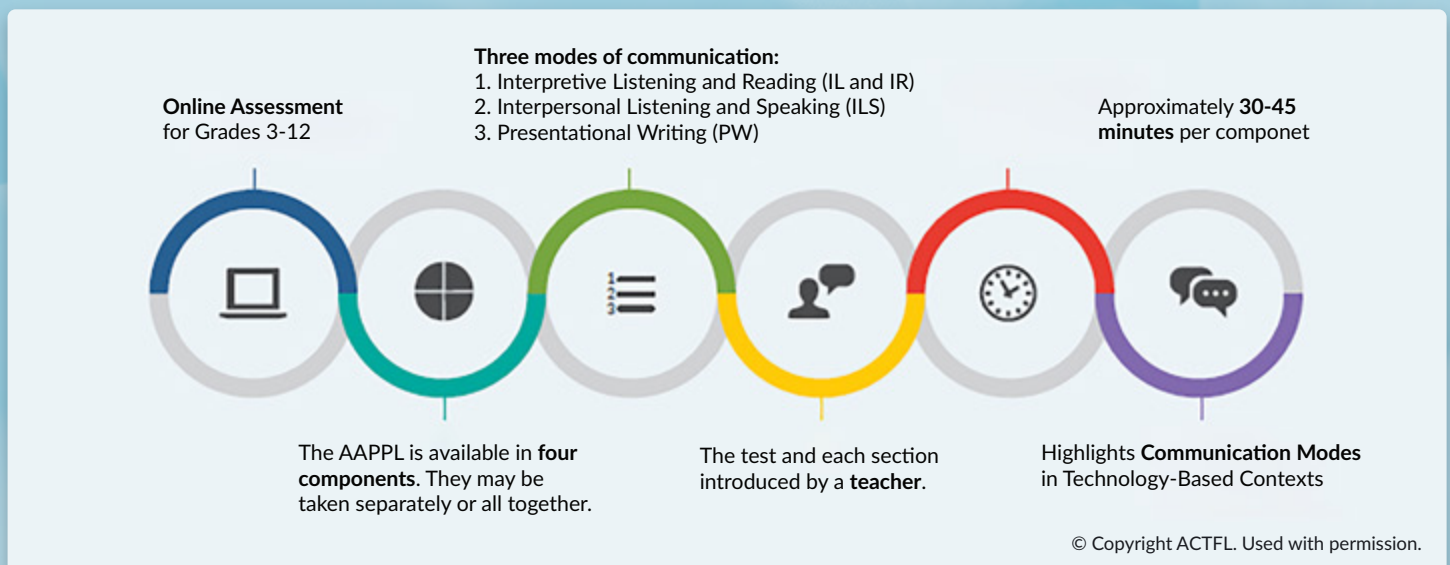
For more information, access the NYSSB Handbook: [www.nysed.gov/sites/default/files/programs/world-languages/nyssb-handbook.pdf](http://www.nysed.gov/sites/default/files/programs/world-languages/nyssb-handbook.pdf) and the Office of Bilingual Education and World Languages: <https://www.nysed.gov/program-offices/office-bilingual-education-and-world-languages-obewl>

Form A assesses Novice to Intermediate levels.

Form B assesses Intermediate to Advanced Low levels.

## WHAT IS THE AAPPL?

The AAPPL is unlike any other assessment. It is a proficiency and performance assessment that addresses the *World-Readiness Standards for Learning Languages* and the only official ACTFL four-skills test for learners in Grades 3-12. The AAPPL is designed to measure and elicit what learners can do with the language in real-life applications, using today's communication media as the context, such as participating in a virtual video chat and writing email messages to demonstrate language ability.



## WHY AAPPL?

- Developed by ACTFL with world language experts.
- Provides AAPPL scores that align to ACTFL Proficiency levels.
- The only test that assesses Interpersonal Listening and Speaking through its innovative video chat partner activity.
- The only assessment for Grades 3-12 that issues ACTFL ratings.
- Designed to elicit and assess language consistent with the *ACTFL Proficiency Guidelines*.
- COPPA-certified to ensure children's privacy online.

## Proficiency-based ACTFL Assessments are available in the following languages to award the **New York State Seal of Biliteracy**



Arabic • Chinese (Mandarin) • English • French • German • Italian • Japanese • Korean • Portuguese • Russian • Spanish



Latin



Albanian • Amharic • Bangla • Bosnian • Bulgarian • Cantonese • Croatian • Dari • Gujarati • Haitian Creole • Hebrew • Hindi • Malayalam • Pashto • Polish • Swahili • Tagalog • Tamil • Thai • Turkish • Ukrainian • Urdu • Vietnamese • Yoruba



120+ languages



30+ languages

The OPI and WPT can be used to fulfill the NY test requirements for students over the age of 13 in the absence of other assessment options.

## Preparing for the AAPPL

ACTFL has prepared several resources with tips to help students and instructors better understand ACTFL proficiency-based tests and prepare for testing.

- Learn more about all K12 assessments at [actfl.org/assessments/k-12-assessments](https://actfl.org/assessments/k-12-assessments).
- AAPPL specific information and what to expect at [actfl.org/assessments/k-12-assessments/aappl](https://actfl.org/assessments/k-12-assessments/aappl).
- AAPPL tips page at [actfl.org/assessments/k-12-assessments/aappl/aappl-pro-tips](https://actfl.org/assessments/k-12-assessments/aappl/aappl-pro-tips).

Understanding proficiency and performance can also help you target your instructional practice and better prepare for success on the AAPPL test.



## Understanding Ratings

The [ACTFL Proficiency Guidelines](#) for Speaking, Writing, Listening, and Reading include glossed terms and multimedia examples that can be useful. Educators can:

- Examine the most current version of the Guidelines by skill or level.
- Listen to and read samples that represent abilities at each of the major proficiency levels.
- Explore descriptors based on communicative mode ([Interpretive](#), [Interpersonal](#), [Presentational](#)).

(<https://www.actfl.org/educator-resources/actfl-proficiency-guidelines>)

The scoring rubric for the AAPPL was developed based on both the [ACTFL Proficiency Guidelines](#) and the [ACTFL Performance Descriptors for Language Learners](#).

To learn more about proficiency and performance, how to prepare for the AAPPL, and what to expect, the LTI blog has many useful resources and tips: [www.languagetesting.com/blog/tag/aappl/](http://www.languagetesting.com/blog/tag/aappl/)

Language Testing International® (LTI), the Exclusive Provider of ACTFL Assessments



Tel: 914-963-7110



Toll Free: 1-800-486-8444



[sales@languagetesting.com](mailto:sales@languagetesting.com)



[www.languagetesting.com/aappl-central](http://www.languagetesting.com/aappl-central)

